

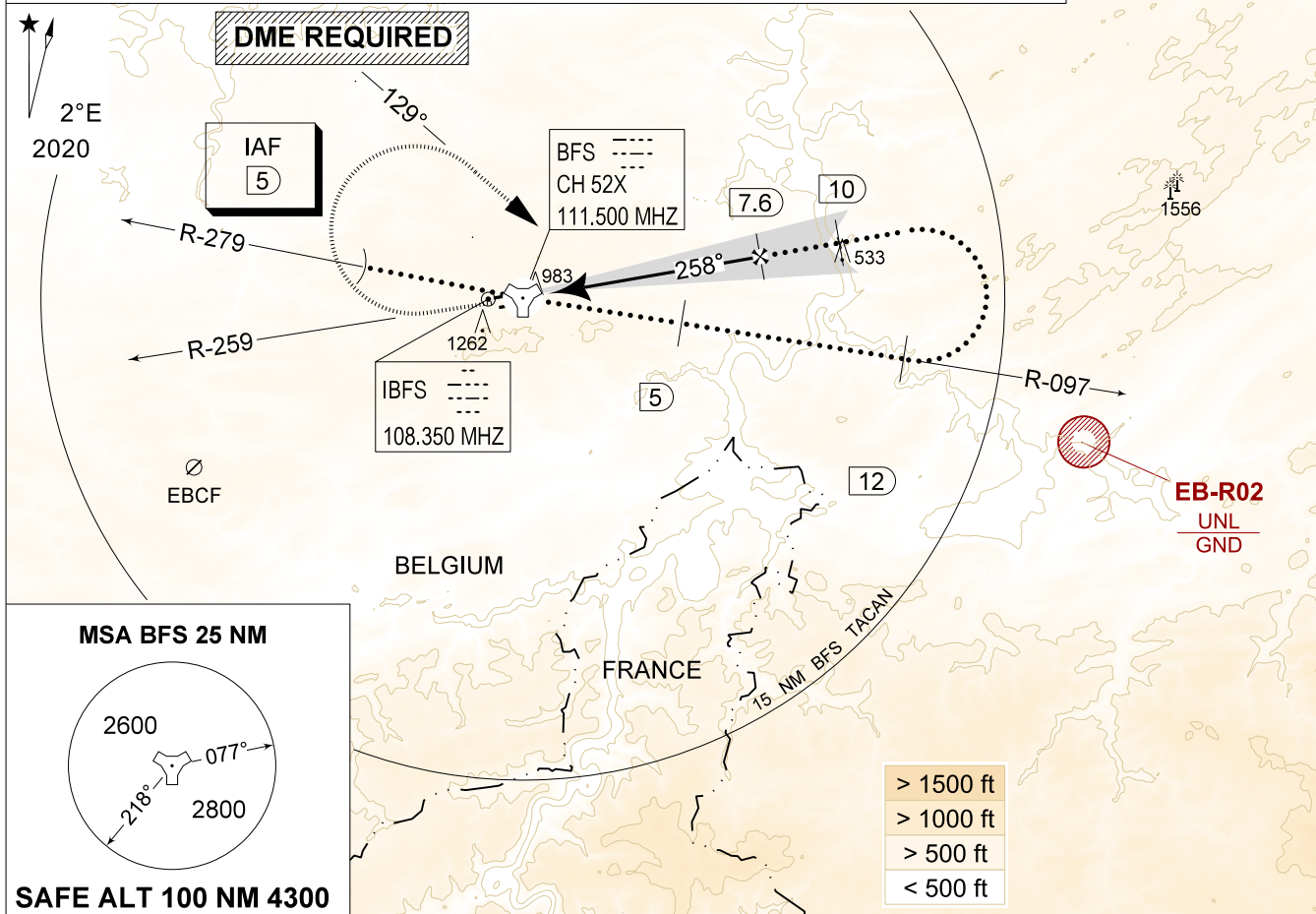
MIPS **QRA HPMA-ILS or QRA HPMA-LOC RWY 26R**
INSTRUMENT APPROACH CHART **AD ELEV 927** **FLORENNES (EBFS)**

BELGA RADAR 374.400 129.325		FLORENNES APP 372.275 124.380		FLORENNES TWR 234.800 125.880		FLORENNES GND 356.925 122.100	
LOC / DME IBFS 108.350 / 52X	APP COURSE 258°	GS INTCP ALT 3000 FT	GS 2.75°	DA 1124	THR 924 FT	ALS 900 M	LDA 8763 FT

WARNING:
a) ONLY TO BE USED FOR QRA RECOVERY OUTSIDE MIL FLYING HOURS OF FOR TRG PURPOSES OF HOMEBASE AIRCRAFT AFTER PRIOR COORDINATION WITH ATC.

NOTE:
a) DME INFORMATION AVAILABLE UNDER FREQUENCY 111.500 MHZ

IAF
50°15.43'N
004°31.55'E



DME BFS	7	6	5	4	3	2	TACAN	REMAIN WITHIN 16 DME	TA 4500
Altitude	2840	2550	2260	1970	1670	1380		(5) 4500 3000	(12) 4500 3000
Height	(1920)	(1630)	(1340)	(1050)	(750)	(460)			

MISSED APPROACH
Climb to 2000 FT on R-259. Passed 2.5 DME TACAN, continue the climb to 3000 FT and turn right on track 129° at MAX 300 KIAS to intercept IAF ILS RWY 26R.

FL120
FL100

IAF (5)

1.1

7.6 3000

10 3000

097°

258°

GS 2.75°

TCH 50 FT

CAT I	THR 924	6.9
-------	---------	-----

CATEGORY	HPMA
S-ILS 26R	1124 - 0.8 200 (200 - 0.8 / 1.0) GS 2.75°
S-LOC 26R	1320 - 1.3 396 (400 - 1.3 / 2.2)
CIRCLING	1560 - 3.2 633 (700 - 3.2)

QRA HPMA-ILS or QRA HPMA-LOC RWY 26R **FLORENNES (EBFS)**
50°14.60' N
004°38.74' E

CHANGES: EB-R02 updated

MIPS

BEL DEFENCE, AIR COMPONENT 25-JAN-2024 - THS