

**MIPS** **QRA HPMA-ILS or QRA HPMA-LOC RWY 08L**  
**INSTRUMENT APPROACH CHART** AD ELEV 927 **FLORENNES (EBFS)**

|                                |                    |                                  |             |                                  |               |                                  |                |
|--------------------------------|--------------------|----------------------------------|-------------|----------------------------------|---------------|----------------------------------|----------------|
| BELGA RADAR<br>374.400 129.325 |                    | FLORENNES APP<br>372.275 124.380 |             | FLORENNES TWR<br>234.800 125.880 |               | FLORENNES GND<br>356.925 122.100 |                |
| LOC/DME<br>IFLR 108.350 / 52X  | APP COURSE<br>078° | GS INTCP ALT<br>3000 FT          | GS<br>3.00° | DA<br>1100                       | THR<br>900 FT | ALS<br>750 M                     | LDA<br>8648 FT |

**WARNING:**

a) ONLY TO BE USED FOR QRA RECOVERY OUTSIDE MIL FLYING HOURS OF FOR TRG PURPOSES OF HOMEBASE AIRCRAFT AFTER PRIOR COORDINATION WITH ATC.

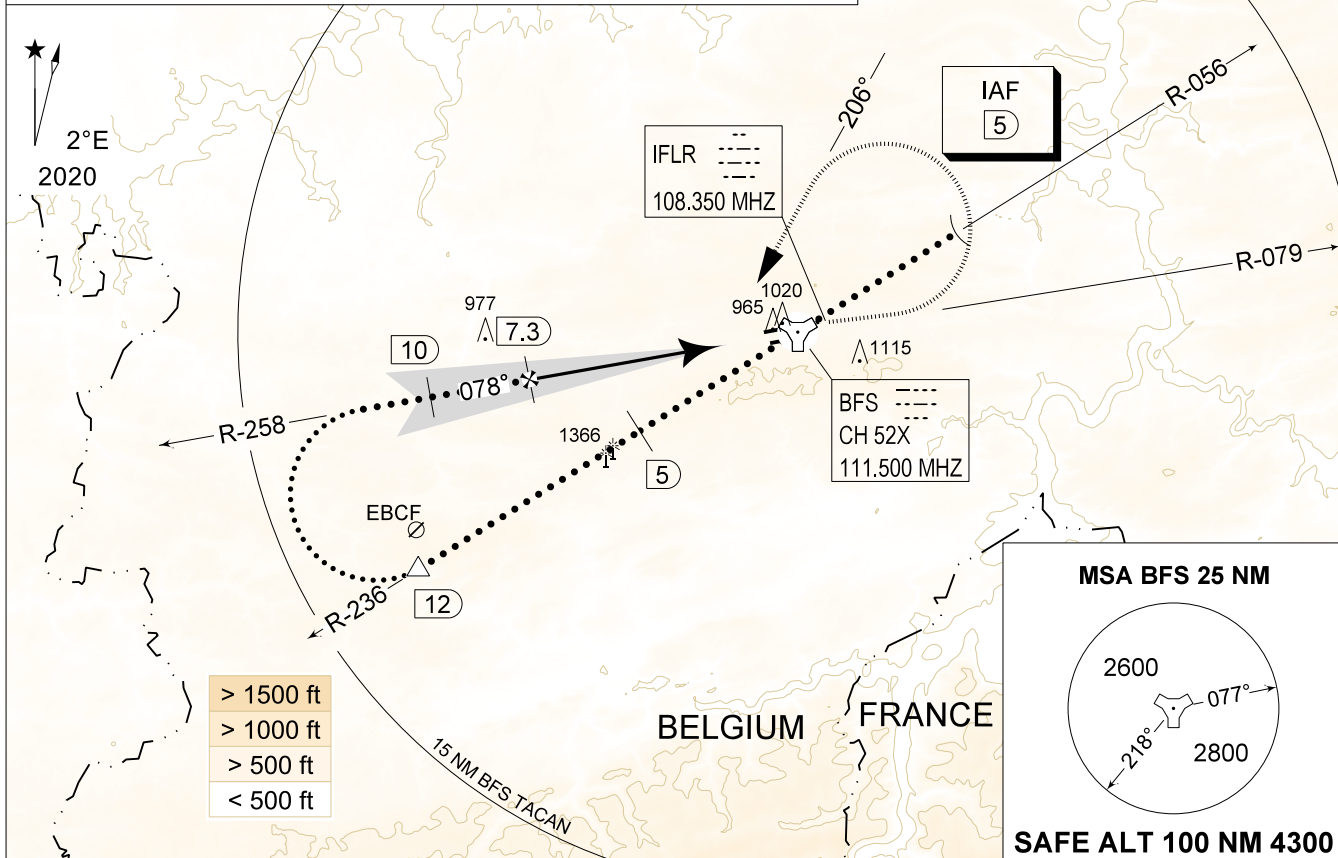
**CAUTION:**

a) LOCALIZER ANTENNA 1000 FT IN FRONT OF THR RWY 08L, 10 FT ABOVE THR ELEV.

**NOTE:**

a) DME INFORMATION AVAILABLE UNDER FREQUENCY 111.500 MHZ

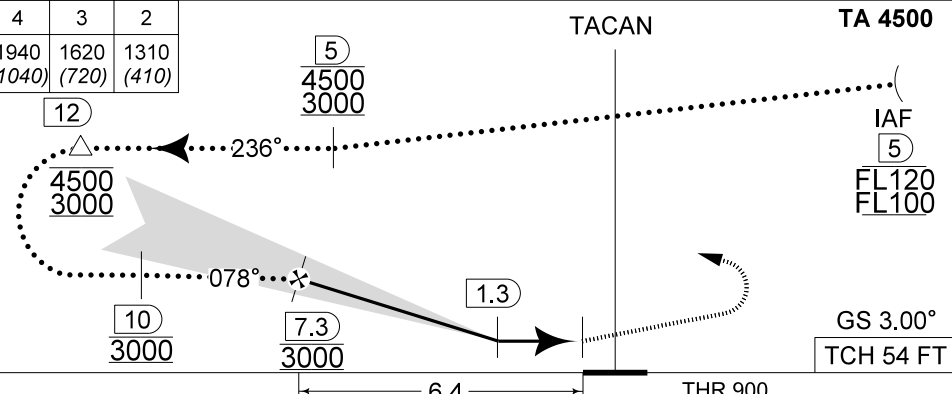
**IAF**  
50°17.13'N  
004°45.81'E



|          |        |        |        |        |       |       |
|----------|--------|--------|--------|--------|-------|-------|
| DME BFS  | 7      | 6      | 5      | 4      | 3     | 2     |
| Altitude | 2900   | 2580   | 2260   | 1940   | 1620  | 1310  |
| Height   | (2000) | (1680) | (1360) | (1040) | (720) | (410) |

**MISSED APPROACH**

Climb to 2000 FT on R-079. Passed 2.5 DME TACAN, continue the climb to 3000 FT and turn left on track 206° at MAX 300 KIAS to intercept IAF ILS RWY 08L.



CAT I

|             |           |   |
|-------------|-----------|---|
| <b>MIPS</b> | CATEGORY  | HPMA                                      |
|             | S-ILS 08L | 1100 - 0.8 200 (200 - 0.8 / 0.9) GS 3.00° |
|             | S-LOC     | 1360 - 1.7 460 (500 - 1.7 / 2.4)          |
|             | CIRCLING  | 1560 - 3.2 633 (700 - 3.2)                |

**QRA HPMA-ILS or QRA HPMA-LOC RWY 08L**

50°14.60' N  
004°38.74' E

**FLORENNES (EBFS)**