

MIPS
INSTRUMENT APPROACH CHART

AD ELEV 927

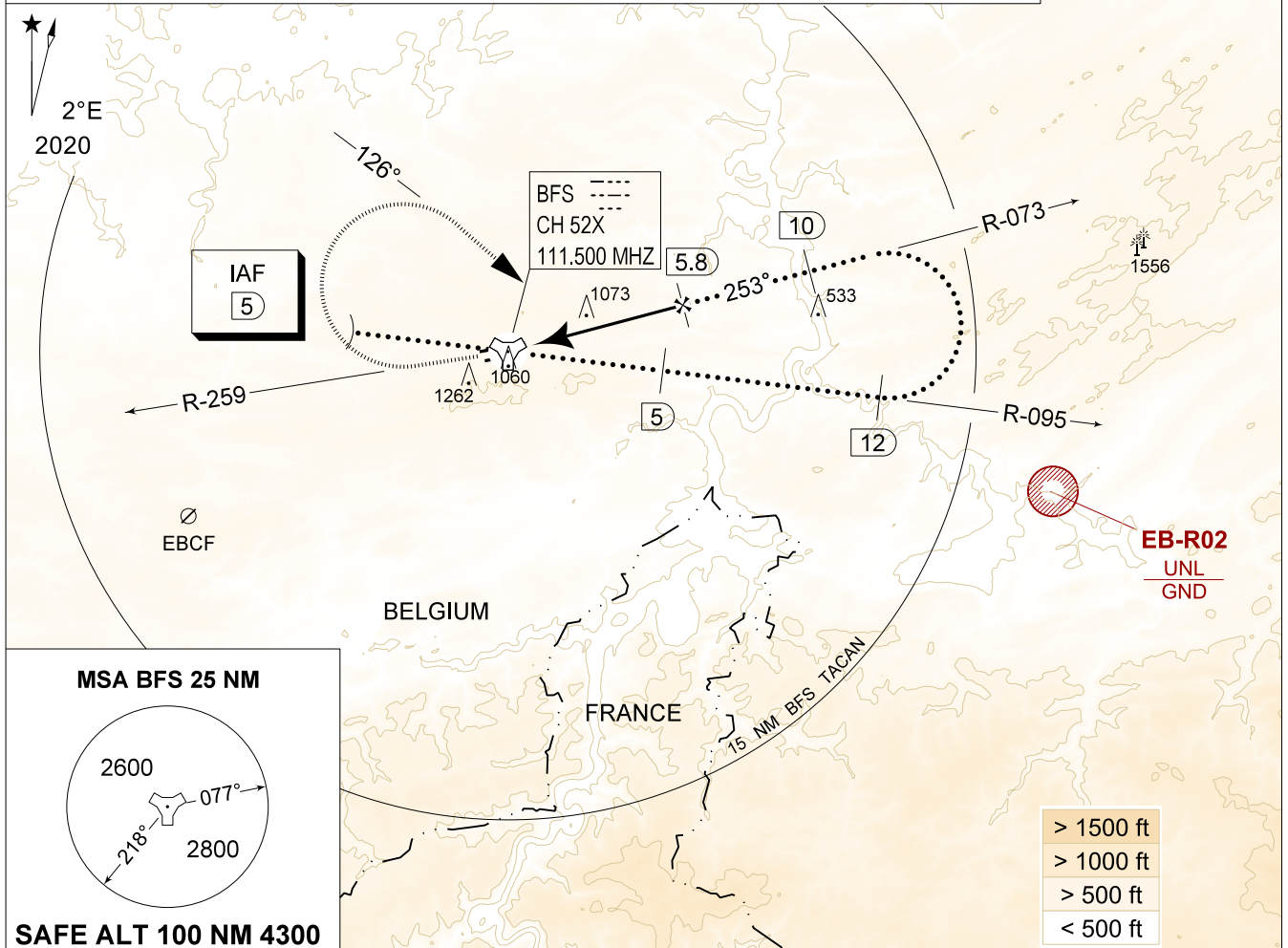
QRA HPMA-TACAN RWY 26R
FLORENNES (EBFS)

BELGA RADAR 374.400 129.325		FLORENNES APP 372.275 124.380		FLORENNES TWR 234.800 125.880		FLORENNES GND 356.925 122.100	
TACAN BFS CH 52X	APP COURSE 253°	FAF ALT 2500 FT	DESCENT GR 4.8% (2.75°)	MDA 1320	THR 924 FT	ALS 900 M	LDA 8763 FT

WARNING:

a) ONLY TO BE USED FOR QRA RECOVERY OUTSIDE MIL FLYING HOURS OF FOR TRG PURPOSES OF HOMEBASE AIRCRAFT AFTER PRIOR COORDINATION WITH ATC.

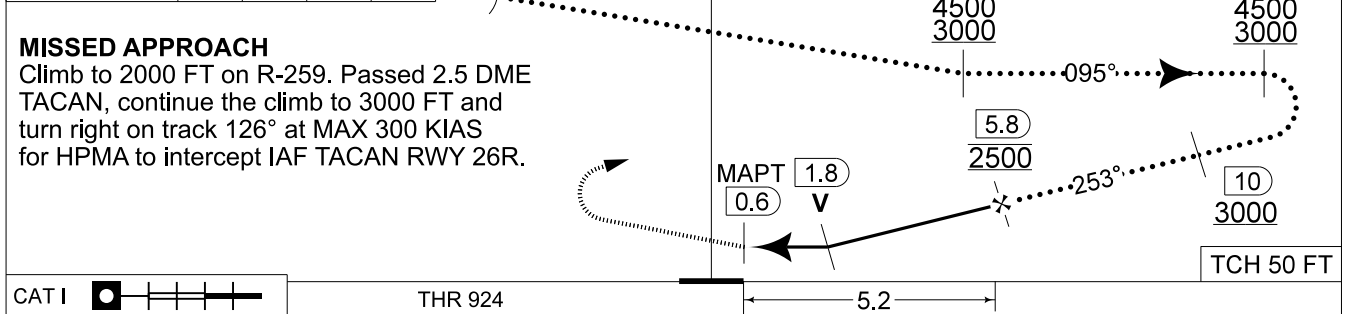
IAF
50°15.09'N
004°31.46'E



DME BFS	5	4	3	2	IAF FL120 FL100	TACAN	REMAIN WITHIN 16 DME	TA 4500
Altitude	2250	1960	1670	1380			5 4500 3000	12 4500 3000
Height	(1330)	(1040)	(750)	(460)				

MISSED APPROACH

Climb to 2000 FT on R-259. Passed 2.5 DME TACAN, continue the climb to 3000 FT and turn right on track 126° at MAX 300 KIAS for HPMA to intercept IAF TACAN RWY 26R.



CAT I	THR 924	HPMA
S-TAC 26R	1320 - 1.3 396 (400 - 1.3 / 2.2)	
CIRCLING	1560 - 3.2 633 (700 - 3.2)	

QRA HPMA-TACAN RWY 26R

50°14.60' N
004°38.74' E

FLORENNES (EBFS)

CHANGES: EB-R02 updated

BEL DEFENCE, AIR COMPONENT 25-JAN-2024 - THS