

MIPS
INSTRUMENT APPROACH CHART

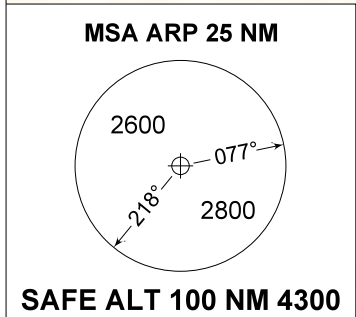
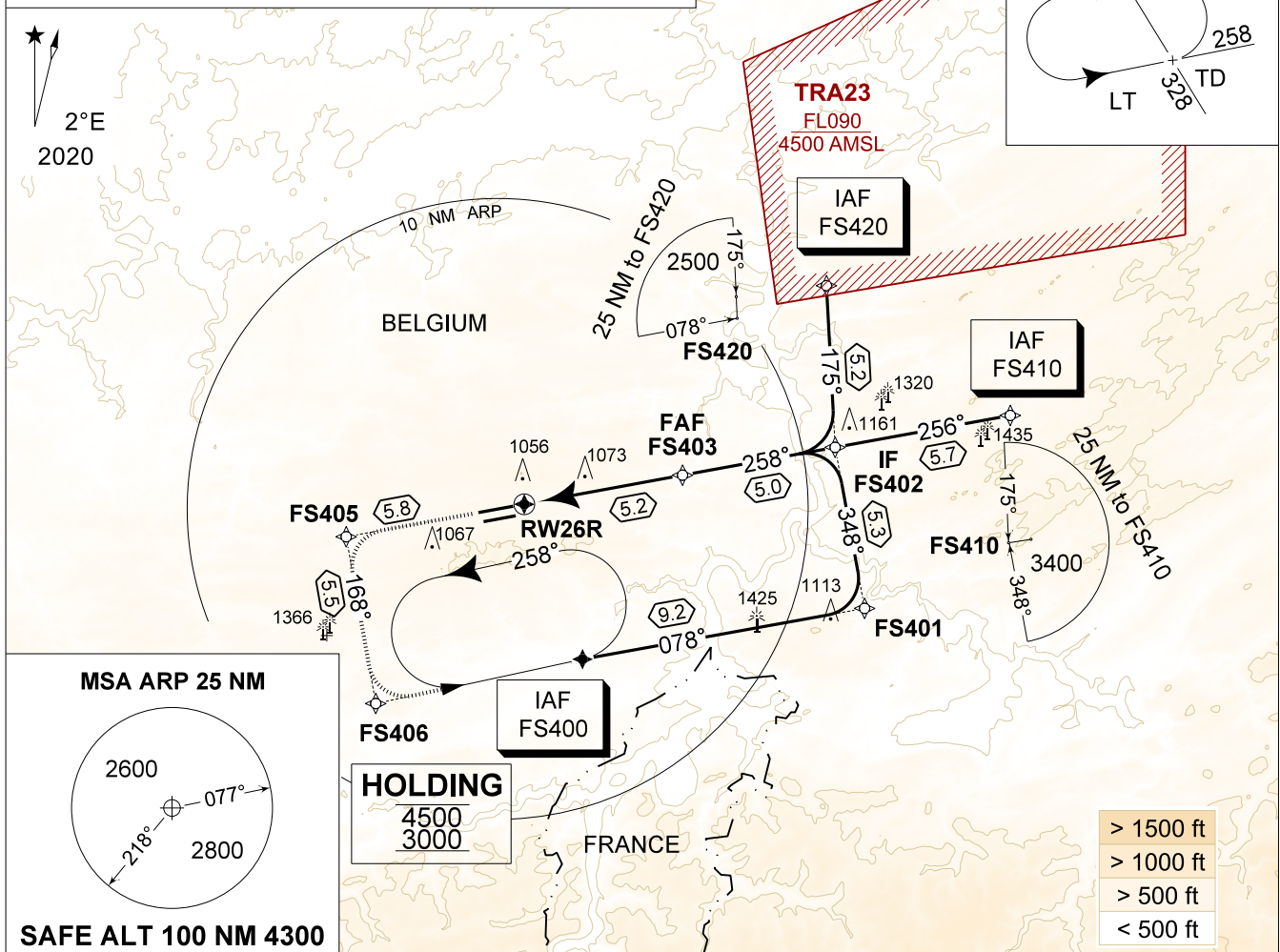
AD ELEV 927

RNP RWY 26R (LNAV)
FLORENNES (EBFS)

BELGA RADAR 374.400 129.325		FLORENNES APP 372.275 124.380		FLORENNES TWR 234.800 125.880		FLORENNES GND 356.925 122.100	
-	APP COURSE 258°	FAF ALT 2500 FT	DESCENT GR 4.8%(2.75°)	MDA 1310	THR 924 FT	ALS 900 M	LDA 8763 FT

WARNING:

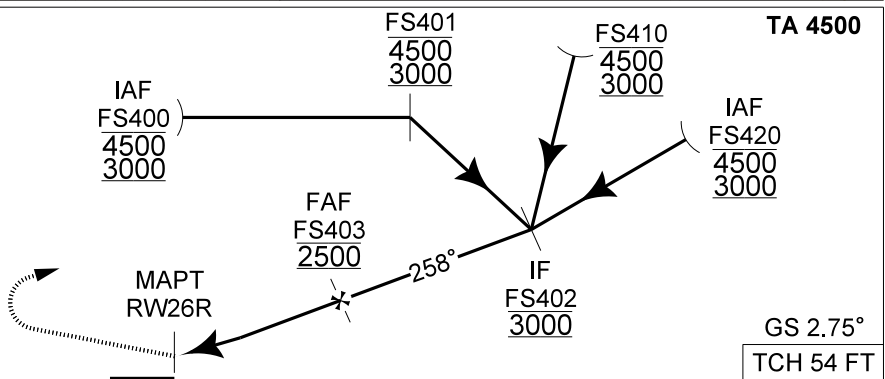
a) TO AVOID LEAVING CONTROLLED AIRSPACE, HOLDING TO BE FLOWN ONLY UNDER RADAR CONTROL.



THR 26R	5	4	3	2
Altitude	2440	2150	1850	1560
Height	(1520)	(1230)	(930)	(640)

MISSED APPROACH

MAX 190 KIAS
Climb inbound FS405 then FS406 to reach IAF FS400 at 3000 FT.



CAT I	THR 924	5.2	TCH 54 FT
-------	---------	-----	-----------

CATEGORY	A	B	C	D
LNAV 26R (MDA)	1310 - 1.3 386 (400 - 1.3 / 2.2)			
CIRCLING	1560 - 1.6 633 (700 - 1.6)		1660 - 3.6 733 (800 - 3.6)	

RNP RWY 26R (LNAV)

50°14.60' N
004°38.74' E

FLORENNES (EBFS)

CHANGES: GROUND FREQ updated

BEL DEFENCE, AIR COMPONENT 07-SEP-2023 - THS