

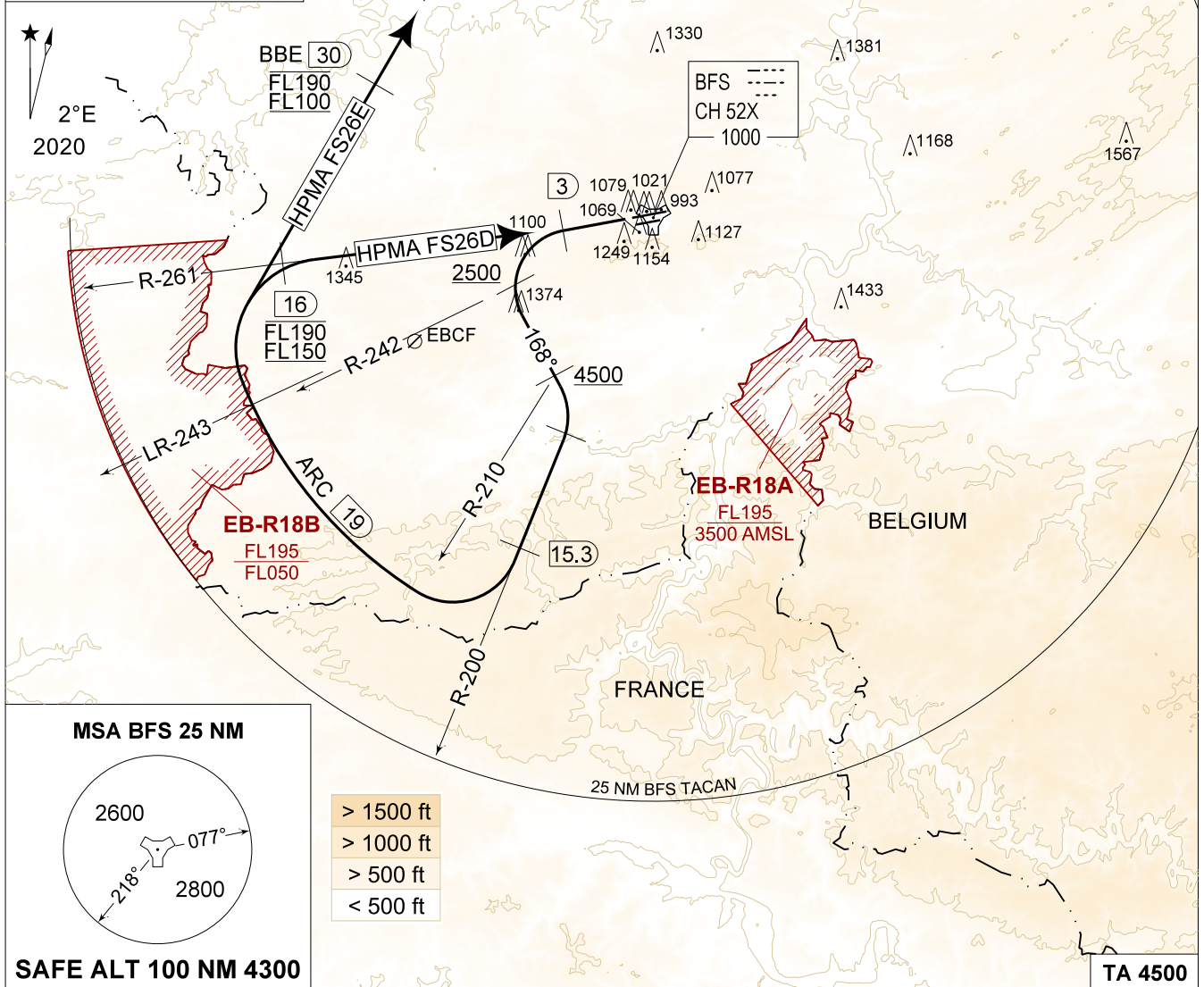
MIPS
INSTRUMENT DEPARTURE CHART

AD ELEV 927

HPMA FS 26D - 26E
FLORENNES (EBFS)

FLORENNES GND 356.925 122.100	FLORENNES TWR 234.800 125.880		FLORENNES APP 372.275 124.380		BELGA RADAR 374.400 129.325				
TACAN BFS - CH 52X	RWY 26	PDG 8.75% 5.00°	From-To DER - 15.3/R-201	120 1070	180 1600	240 2130	300 2660	360 3190	Reason ATC
TACAN BBE - CH 107X									

NOTE:
a) MAX 300 KT IAS.



HPMA FS 26D
(RWY 26)
(51)

- Climb straight ahead and contact EBFS APP.
- At 3 DME turn left on track 168° to intercept R-200 outbound.
- Pass R-242 at 2500 FT AMSL or above.
- Pass R-210 at 4500 FT AMSL or above.
- Contact BELGA RADAR passing 4500 FT AMSL.
- Turn right on the 19 DME arc to intercept R-261 inbound.
- Pass 16 DME / R-261 between FL150 and FL190. Climb as directed.

HPMA FS 26E
(RWY 26)
(49)

- Climb straight ahead and contact EBFS APP.
- At 3 DME turn left on track 168° to intercept R-200 outbound.
- Pass R-242 at 2500 FT AMSL or above.
- Pass R-210 at 4500 FT AMSL or above.
- Contact BELGA RADAR passing 4500 FT AMSL.
- Turn right on the 19 DME arc to intercept BBE R-212 inbound.
- Pass BBE 30 DME / R-212 between FL100 and FL190. Climb as directed.

HPMA FS 26D - 26E

50°14.60' N
004°38.74' E

FLORENNES (EBFS)

CHANGES: GROUND FREQ updated

BEL DEFENCE, AIR COMPONENT 07-SEP-2023 - THS