

**MIPS**  
**INSTRUMENT APPROACH CHART**

AD ELEV 192

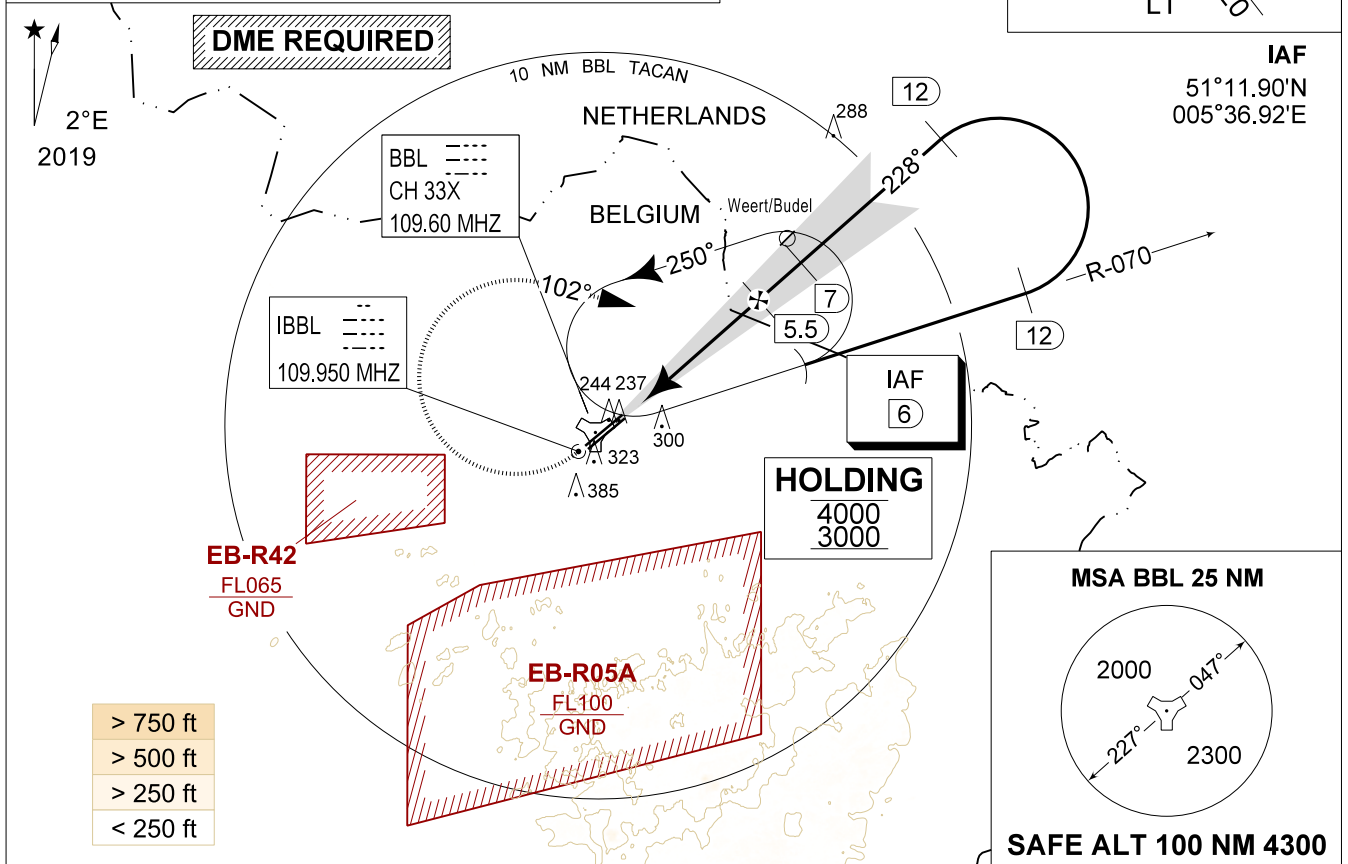
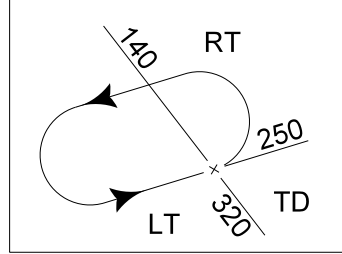
**ILS or LOC RWY 23R**  
**KLEINE-BROGEL (EBBL)**

BELGA RADAR 374.400 129.325		KLEINE-BROGEL APP 337.600 134.480		KLEINE-BROGEL TWR 248.075 134.105		KLEINE-BROGEL GND 362.775 122.100	
LOC / DME IBBL 109.950 / 33X	APP COURSE 228°	GS INTCP ALT 1700 FT	GS 3.00°	DA 361	THR 161 FT	ALS 930 M	LDA 8045 FT

**CAUTION:**  
a) CLASS E AIRSPACE IN AMSTERDAM FIR

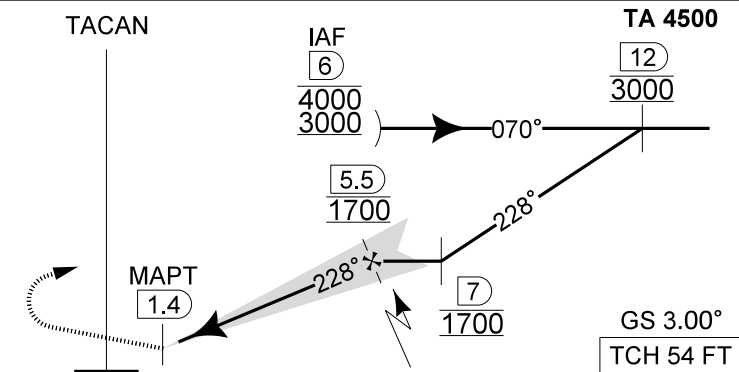
**WARNING:**  
a) MISSED APPROACH CLIMB GRADIENT OF MNM 3.2% IN THE STRAIGHT SEGMENT DUE TO OBSTACLES

**NOTE:**  
a) DME FREQUENCY 109.600 MHZ



DME BBL	5	4	3	2
Altitude	1540	1220	900	580
Height	(1379)	(1059)	(739)	(419)

**MISSED APPROACH**  
Climb straight ahead to 1000 FT. Passing 1 DME outbound BBL TACAN turn right track 102° at MAX 210 KIAS (MAX 275 KIAS for HPMA) and continue the climb to 3000 FT. Intercept R-070 outbound. If no radio contact, proceed for a ILS RWY 23R at 3000 FT.



CATEGORY	A - B - C - D	HPMA
S-ILS 23R	<b>361</b> - 0.8 200 (200 - 0.8 / 0.9) GS 3.00°	
S-PAR 23R	<b>429</b> - 0.8 268 (300 - 0.8 / 1.3) GS 3.00°	<b>366</b> - 0.8 205 (300 - 0.8 / 0.9) GS 3.00°
S-LOC 23R	<b>540</b> - 1.1 379 (400 - 1.1 / 1.9)	

**ILS or LOC RWY 23R**

51°10.10' N  
005°28.19' E

**KLEINE-BROGEL (EBBL)**

CHANGE: CAUTION and WARNING

BEL DEFENCE, AIR COMPONENT 30-NOV-2023 - THS