

MIPS
INSTRUMENT APPROACH CHART

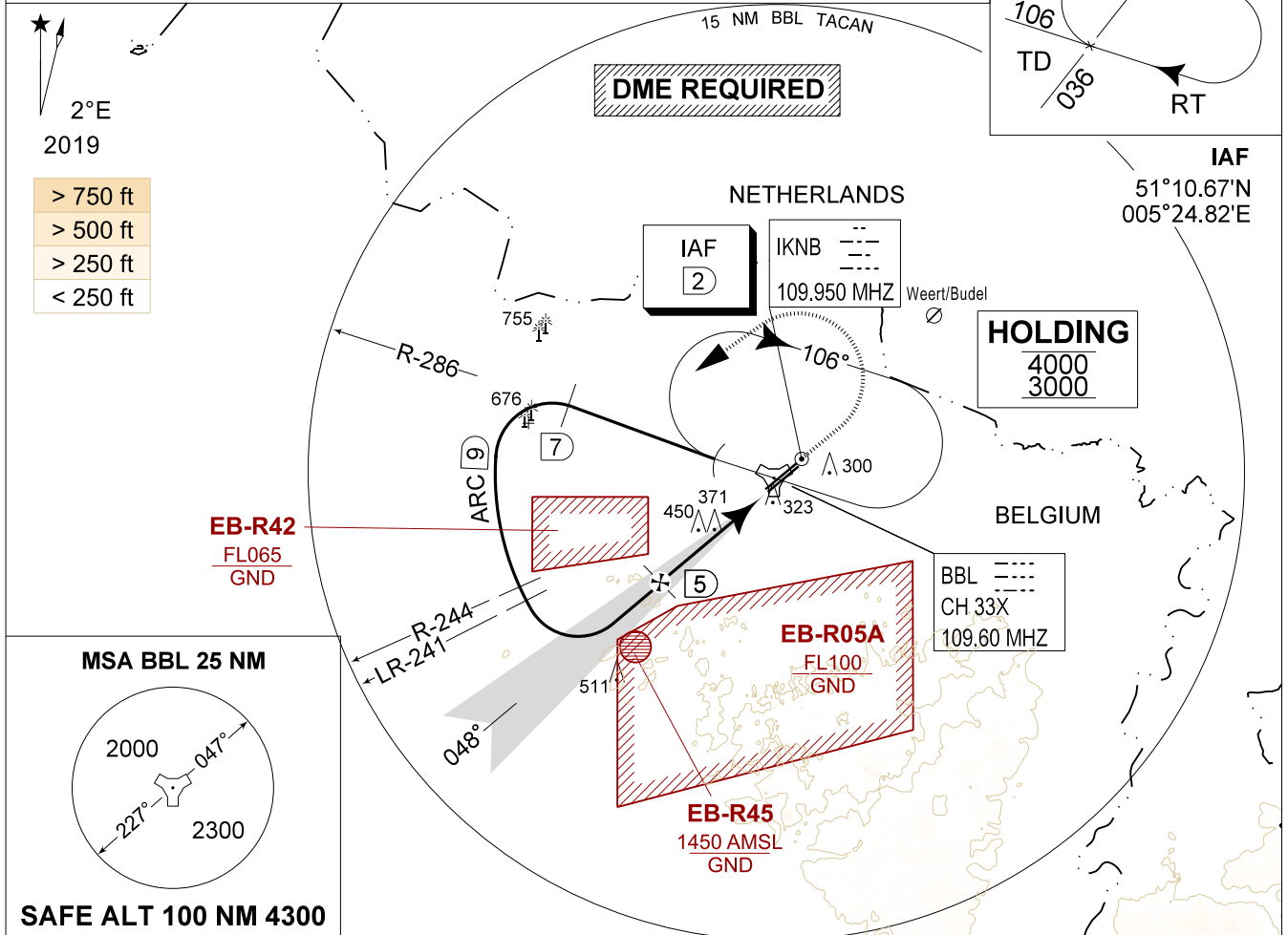
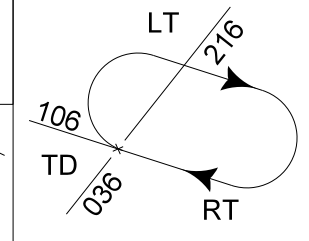
ILS or LOC RWY 05L
KLEINE-BROGEL (EBBL)

AD ELEV 192

BELGA RADAR 374.400 129.325		KLEINE-BROGEL APP 337.600 134.480		KLEINE-BROGEL TWR 248.075 134.105		KLEINE-BROGEL GND 362.775 122.100	
LOC / DME IKNB 109.950 / 33X	APP COURSE 048°	GS INTCP ALT 1700 FT	GS 3.00°	DA 385	THR 185	ALS 930 M	LDA 8104 FT

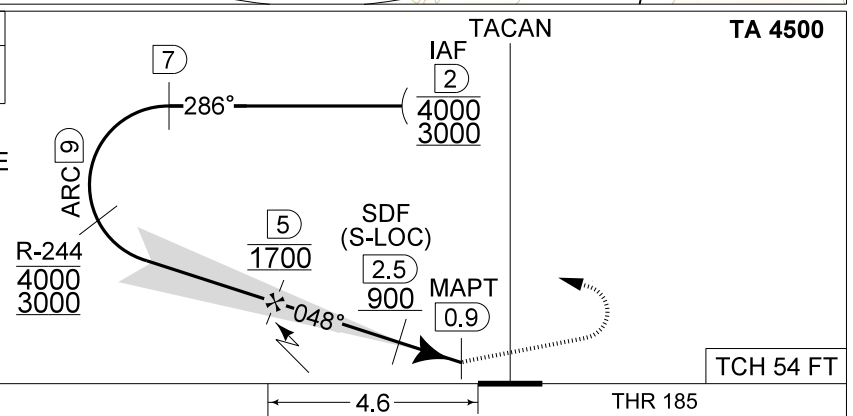
CAUTION:
a) ATC MONITORING REQUIRED TO REMAIN CLEAR OF EB-R42

NOTE:
a) DME FREQUENCY 109.600 MHZ



DME BBL	5	4	3	2	1
Altitude	1700	1380	1060	740	420
Height	(1515)	(1195)	(875)	(555)	(235)

MISSED APPROACH
Climb straight ahead to 1000 FT. At 1 DME passed BBL TACAN continue climb to 3000 FT. At 2.5 DME passed BBL TACAN turn left at MAX 210 KIAS (MAX 275 KIAS for HPMA) to Intercept 7 DME/R-286 outbound and proceed for a ILS RWY 05L.



CAT I

CATEGORY	A - B - C - D	HPMA
S-ILS 05L	385 - 0.8 200 (200 - 0.8 / 0.9) GS 3.00°	
S-PAR 05L	442 - 0.8 257 (300 - 0.8 / 1.2) GS 3.00°	385 - 0.8 200 (200 - 0.8 / 0.9) GS 3.00°
S-LOC 05L	620 - 1.3 435 (500 - 1.3 / 2.3)	

ILS or LOC RWY 05L 51°10.10' N 005°28.19' E **KLEINE-BROGEL (EBBL)**

CHANGE: CAUTION and NOTE

BEL DEFENCE, AIR COMPONENT 30-NOV-2023 - THS