

**MIPS**  
**INSTRUMENT APPROACH CHART**

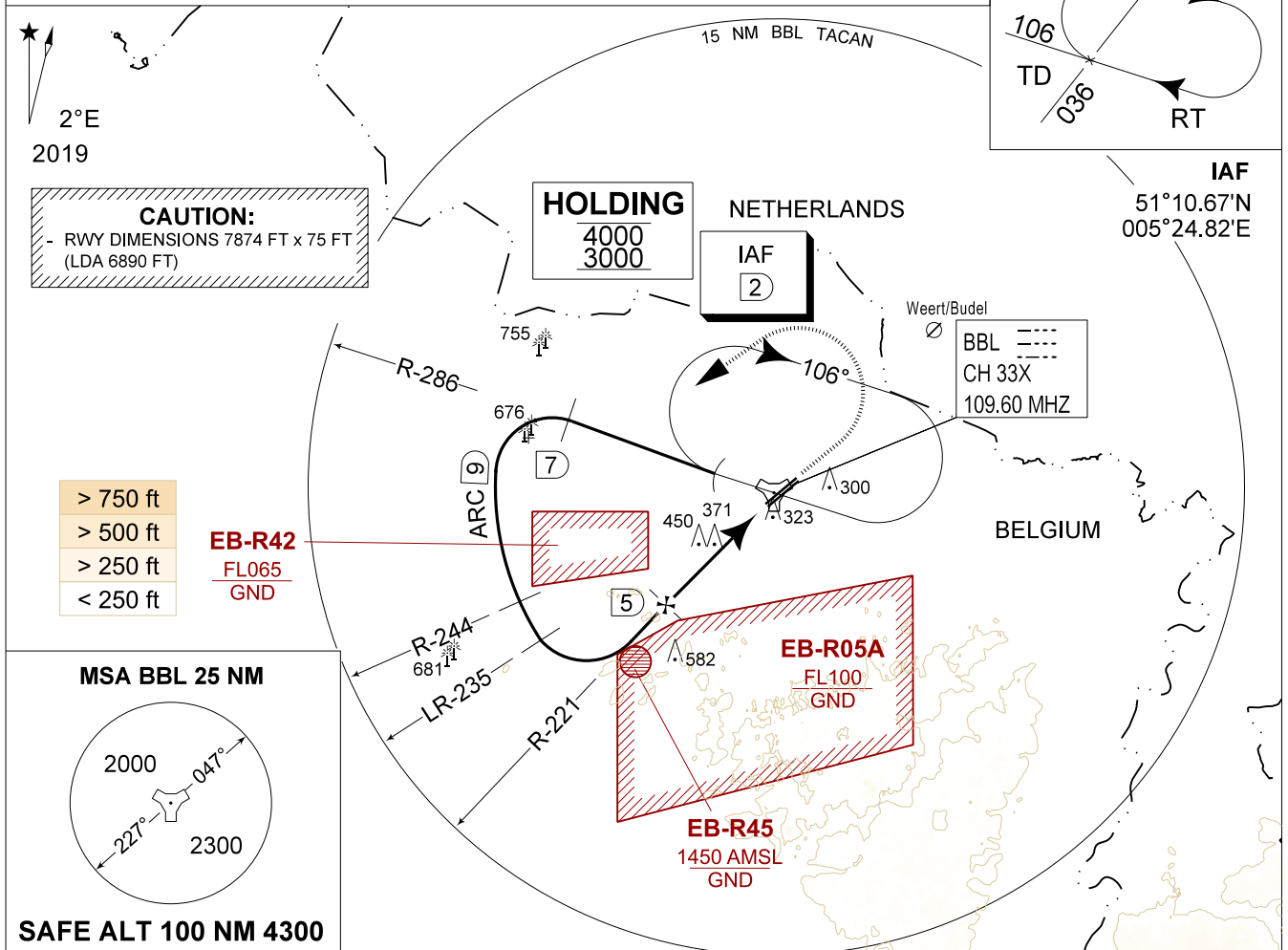
**TACAN RWY 05R**  
**KLEINE-BROGEL (EBBL)**

AD ELEV 192

BELGA RADAR 374.400 129.325		KLEINE-BROGEL APP 337.600 134.480		KLEINE-BROGEL TWR 248.075 134.105		KLEINE-BROGEL GND 362.775 122.100	
LOC / DME BBL CH 33X	APP COURSE 041°	FAF ALT 1700 FT	DESCENT GR 5.24% (3.00°)	MDA <b>620</b>	THR 190 FT	ALS -	LDA 6890 FT

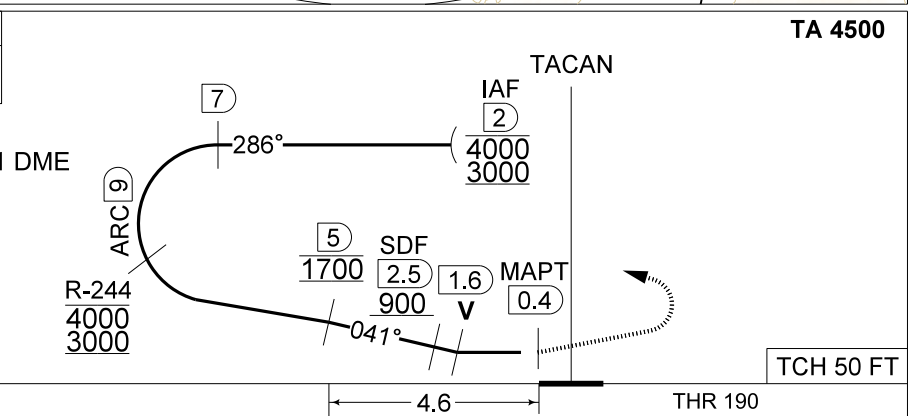
**CAUTION:**

- a) ATC MONITORING REQUIRED TO REMAIN CLEAR OF EB-R42
- b) DECONFLICTION WITH EB-R05A REQUIRED WHEN PAMPA IS ACTIVE



DME BBL	5	4	3	2
Altitude	1690	1370	1060	740
Height	(1500)	(1180)	(870)	(550)

**MISSED APPROACH**  
Climb straight ahead to 1000 FT. At 1 DME passed BBL TACAN continue climb to 3000 FT. At 2.5 DME passed BBL TACAN turn left at MAX 210 KIAS (MAX 275 KIAS for HPMA) to Intercept 7 DME/R-286 outbound and proceed for a TACAN RWY 05L.



NO LIGHTS

CATEGORY	A		HPMA
S-TAC 05R	<b>620</b> - 2.3 430 (500 - 2.3 / 2.3)		
S-PAR 05R	<b>N/A</b>		<b>399</b> - 1.0 209 (300 - 1.0 / 1.0) GS 3.00°
CIRCLING	<b>700</b> - 1.5 508 (600 - 1.5)		<b>770</b> - 3.2 578 (600 - 3.2)

**TACAN RWY 05R** 51°10.10' N 005°28.19' E **KLEINE-BROGEL (EBBL)**

CHANGE: CAUTION MIPS

BEL DEFENCE, AIR COMPONENT 30-NOV-2023 - THS