

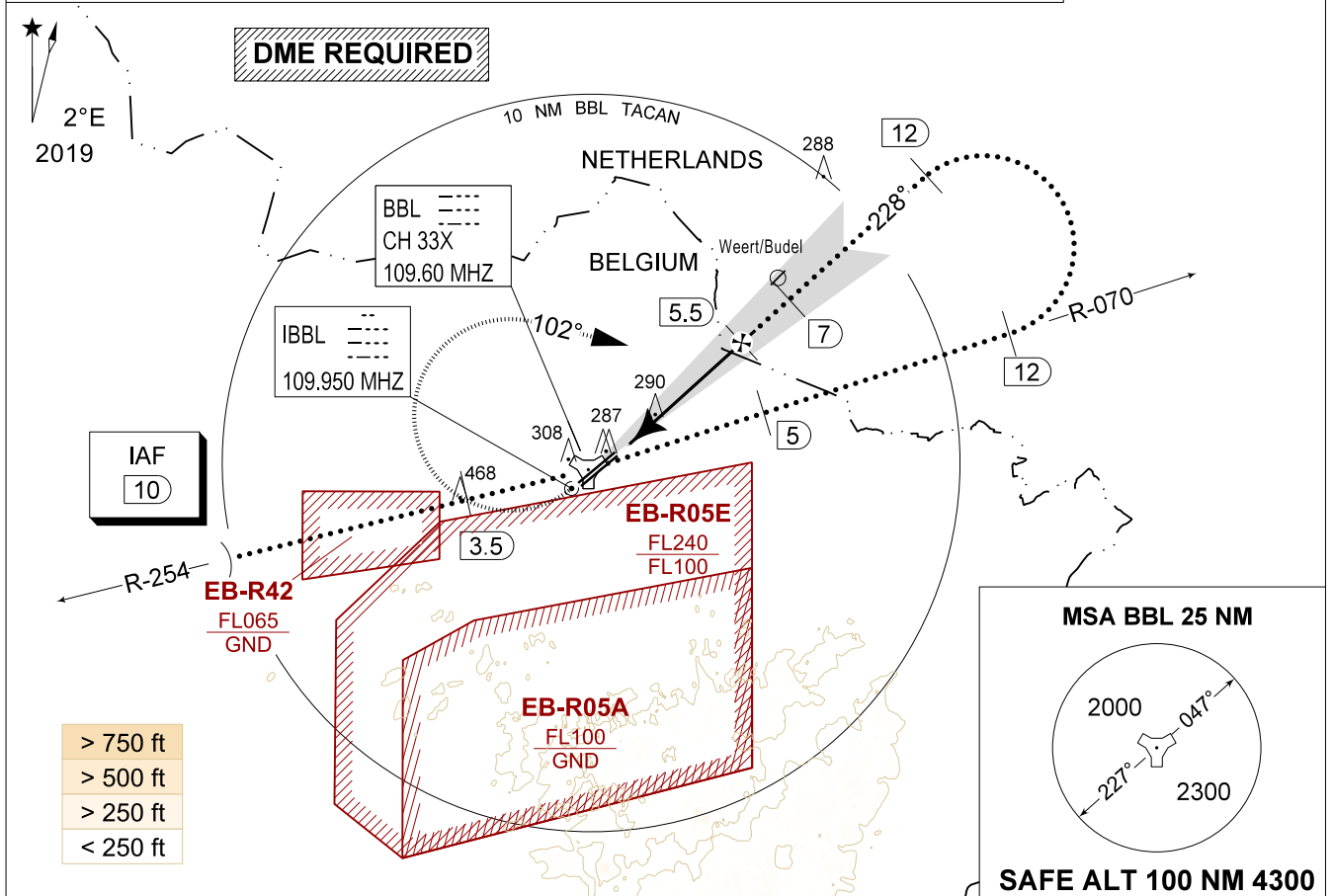
**MIPS** **QRA HPMA-ILS or QRA HPMA-LOC RWY 23R**  
**INSTRUMENT APPROACH CHART** AD ELEV 192 **KLEINE-BROGEL (EBBL)**

BELGA RADAR 374.400 129.325		KLEINE-BROGEL APP 337.600 134.480		KLEINE-BROGEL TWR 248.075 134.105		KLEINE-BROGEL GND 362.775 122.100	
LOC / DME IBBL 109.950 / 33X	APP COURSE 228°	GS INTCP ALT 1700 FT	GS 3.00°	DA 361	THR 161 FT	ALS 930 M	LDA 8045 FT

**CAUTION:**

- a) TO BE USED FOR QRA RECOVERY OUTSIDE MIL FLYING HOURS OR FOR TRAINING PURPOSES OF HOMEBASED AIRCRAFT
- b) AIRCRAFT PROCEEDING IAF AT FL 100 OR ABOVE REQUIRES DECONFLICTION WITH EB-R05E
- c) CLASS E AIRSPACE IN AMSTERDAM FIR

**IAF**  
51°07.62'N  
005°12.44'E



DME BBL	5	4	3	2
Altitude	1540	1220	900	580
Height	(1379)	(1059)	(739)	(419)

**MISSED APPROACH**  
Climb straight ahead to 1000 FT. Passing 1 DME BBL TACAN turn right track 102° at MAX 275 KIAS and continue the climb to 3000 FT. Intercept R-070 outbound. If no radio contact, proceed for a ILS RWY 23R at 3000 FT.

**TACAN** 074°  
IAF 10 3.5 FL165 FL100  
REMAIN WITHIN 15 DME TA 4500  
5 3000  
5.5 1700  
12 3000  
MAPT 1.4  
7 1700  
GS 3.00°  
TCH 54 FT

CAT I  THR 161 4.6

CATEGORY	HPMA
S-ILS 23R	<b>361</b> - 0.8 200 (200 - 0.8 / 0.9) GS 3.00°
S-PAR 23R	<b>366</b> - 0.8 205 (300 - 0.8 / 0.9) GS 3.00°
S-LOC 23R	<b>540</b> - 1.0 379 (400 - 1.0 / 1.9)

**QRA HPMA-ILS or QRA HPMA-LOC RWY 23R** 51°10.10' N 005°28.19' E **KLEINE-BROGEL (EBBL)**

CHANGE: CAUTION

MIPS

BEL DEFENCE, AIR COMPONENT 30-NOV-2023 - THS