

**MIPS**

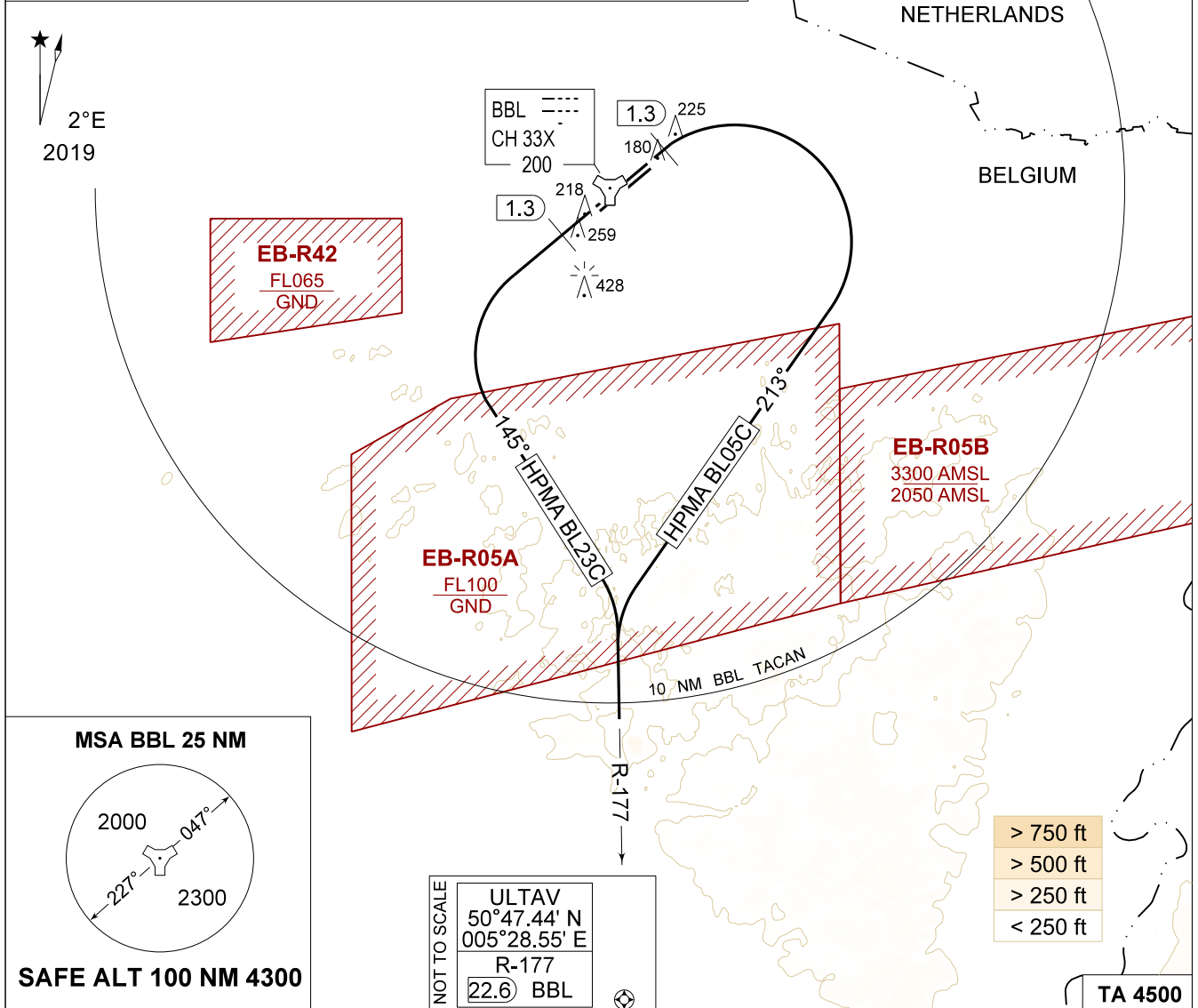
**INSTRUMENT DEPARTURE CHART**

AD ELEV 192

**HPMA BL 05C - 23C  
KLEINE-BROGEL (EBBL)**

KLEINE-BROGEL GND 362.775 122.100	KLEINE-BROGEL TWR 248.075 134.105		KLEINE-BROGEL APP 337.600 134.480		BELGA RADAR 374.400 129.325					
TACAN BBL - CH 33X	RWY <b>05</b>	PDG 8.75%	5.00°	From-To DER-ULTAV	120 1070	180 1600	240 2130	300 2660	360 3190	Reason <b>ATC</b>
	<b>23</b>	8.75%	5.00°	DER-ULTAV	1070	1600	2130	2660	3190	<b>ATC</b>

**CAUTION:**  
a) PROCEDURE CANNOT BE EXECUTED WHEN EB-R05A IS ACTIVE  
b) NO TURN BEFORE 1.3 DME



HPMA BL 05C  
(RWY 05)  
24

- Climb RWY heading and contact EBBL APP.
- Passing 600 FT AMSL or 1.3 DME, whichever comes the latest, turn right and track 213° to Intercept R-177 outbound BBL TACAN.
- Passing 4500 FT, contact BELGA RADAR.
- Continue on R-177 to ULTAV to join Liège corridor.

HPMA BL 23C  
(RWY 23)  
16

- Climb RWY heading and contact EBBL APP.
- Passing 600 FT AMSL or 1.3 DME, whichever comes the latest, turn left and track 145° to Intercept R-177 outbound BBL TACAN.
- Passing 4500 FT, contact BELGA RADAR.
- Continue on R-177 to ULTAV to join Liège corridor.

CHANGE: CAUTION

**HPMA BL 05C - 23C**

51°10.10' N  
005°28.19' E

**KLEINE-BROGEL (EBBL)**