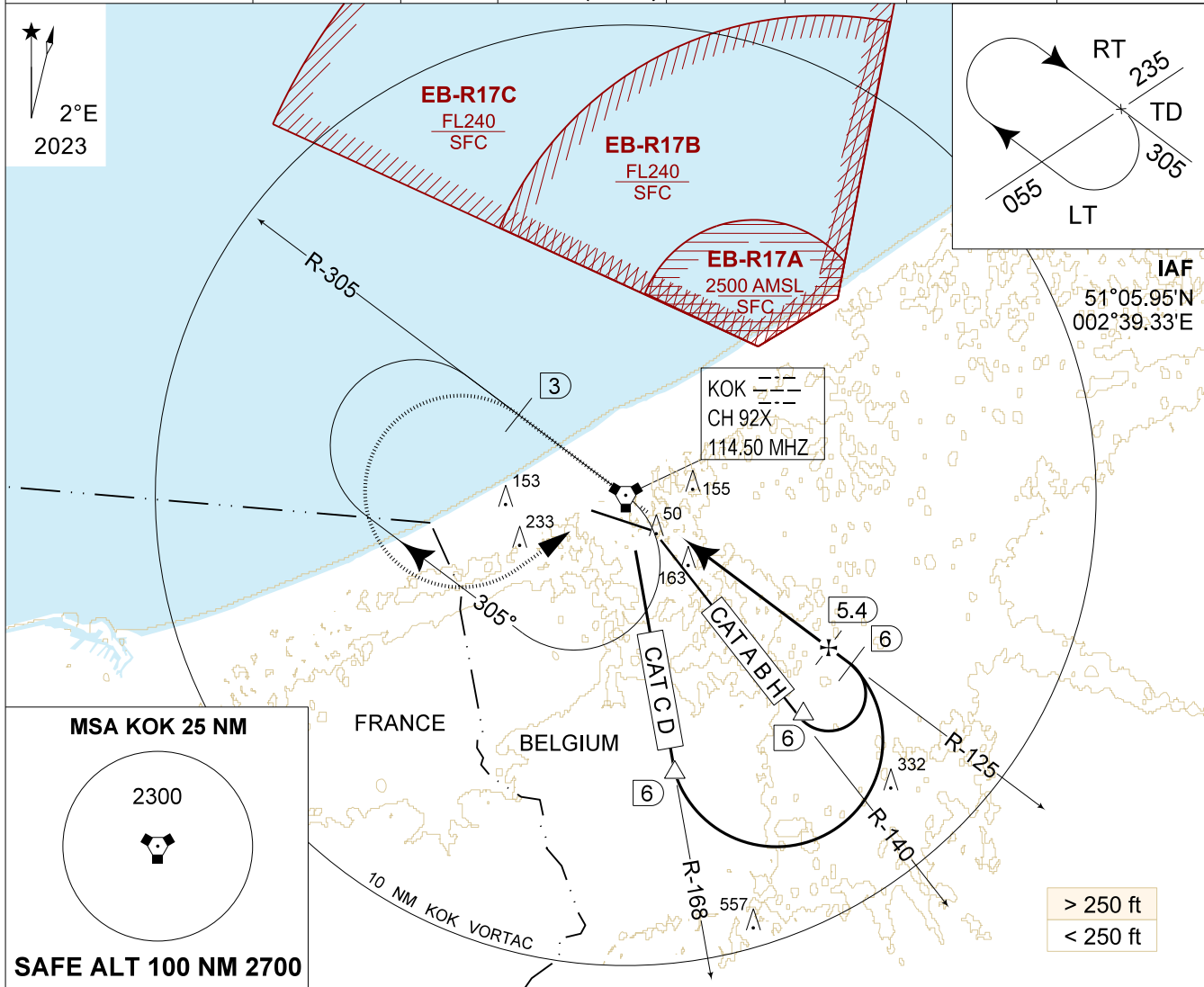


**MIPS**  
**INSTRUMENT APPROACH CHART**

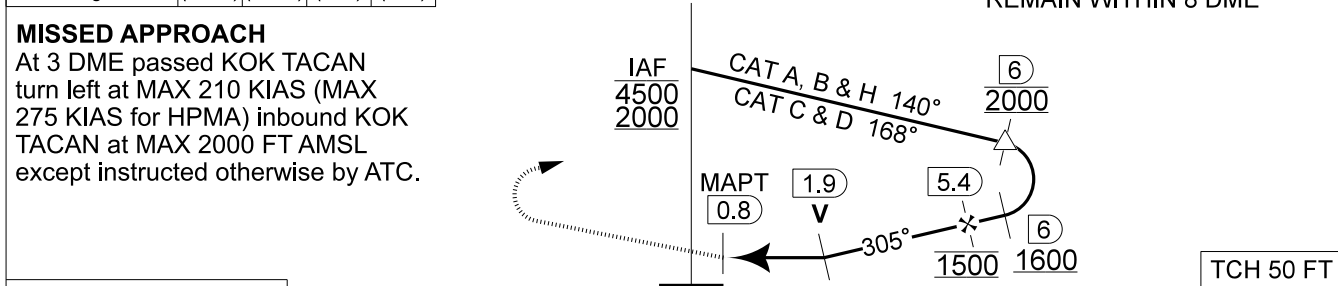
**TACAN RWY 29**  
**KOKSIJDE (EBFN)**

AD ELEV 11

BELGA RADAR 374.400 129.325		KOKSIJDE APP 235.050 121.055		KOKSIJDE TWR 231.800 122.100		KOKSIJDE GND 231.800 122.100	
DVORTAC KOK 114.500 CH 92X	APP COURSE 305°	FAF ALT 1500 FT	DESCENT GR 5.24%(3.00°)	MDA 410	THR 11 FT	ALS 420 M	LDA 8446 FT



DME KOK	5	4	3	2	<b>TA 4500</b>
Altitude Height	1400 (1389)	1080 (1069)	770 (759)	450 (439)	



S-ALS	THR 11	4.5	TCH 50 FT
-------	--------	-----	-----------

CATEGORY	A - B	C - D	H
S-TAC 29	<b>410</b> - 1.5 399 (400 - 1.5 / 2.2)	<b>410</b> - 1.8 399 (400 - 1.8 / 2.2)	<b>410</b> - 1.5 399 (400 - 1.5 / 2.2)
S-PAR 29	<b>211</b> - 0.8 200 (200 - 0.8 / 1.0) GS 3.00°		<b>162</b> - 0.4 151 (200 - 0.4 / 0.8) GS 3.00°

**TACAN RWY 29** 51°05.42' N 002°39.17' E **KOKSIJDE (EBFN)**