

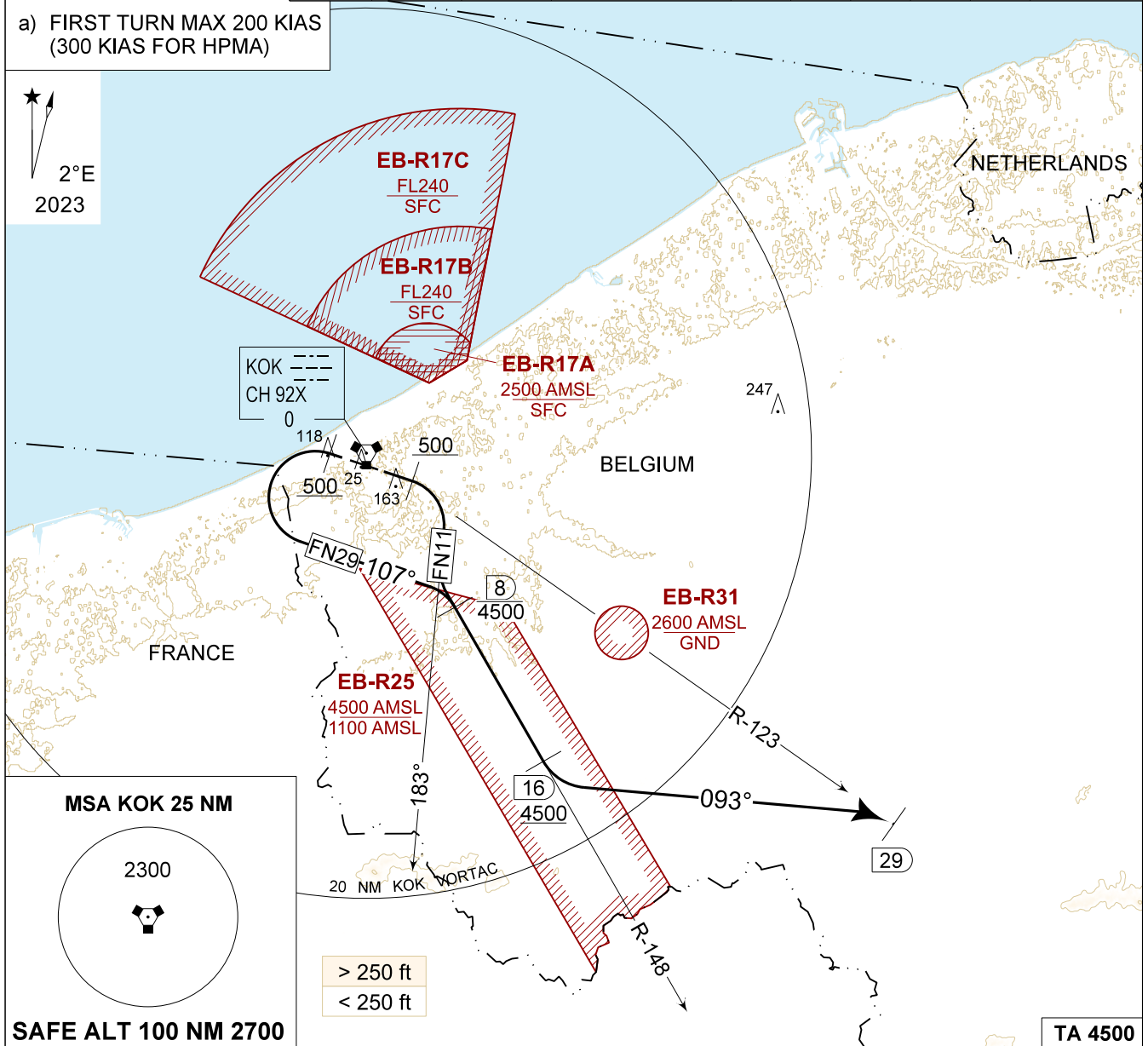
MIPS

INSTRUMENT DEPARTURE CHART

AD ELEV 11

**FN 11 - 29
KOKSIJDE (EBFN)**

KOKSIJDE GND 231.800 122.100	KOKSIJDE TWR 231.800 122.100		KOKSIJDE APP 235.050 121.055		BELGA RADAR 374.400 129.325					
DVORTAC KOK 114.500 CH 92X	RWY 11	PDG 4.48% 2.57°		From-To DER-4500	120 550	180 820	240 1090	300 1370	360 1640	Reason ATC
CAUTION: a) FIRST TURN MAX 200 KIAS (300 KIAS FOR HPMA)	29	3.30% 1.89°		DER-4500	410	610	810	1010	1210	ATC



<p>FN 11 (RWY 11) 30</p>	<ul style="list-style-type: none"> - Climb straight ahead. - When passing 500 FT AMSL turn right, track 183° to intercept R-148 outbound KOK VORTAC. - Remain below 4500 FT until passing 8 DME on R-148 outbound KOK. - Contact BELGA RADAR, when passing 4500 FT. - At 16 DME, above 4500 FT turn left heading 093°. - Intercept R-123 outbound KOK.
<p>FN 29 (RWY 29) 38</p>	<ul style="list-style-type: none"> - Climb straight ahead. - When passing 500 FT AMSL turn left, track 107° to intercept R-148 outbound KOK VORTAC. - Remain below 4500 FT until passing 8 DME on R-148 outbound KOK. - Contact BELGA RADAR, when passing 4500 FT. - At 16 DME, above 4500 FT turn left heading 093°. - Intercept R-123 outbound KOK.

FN 11 - 29

51°05.42' N
002°39.17' E

KOKSIJDE (EBFN)

CHANGE: MAG VAR

BEL DEFENCE, AIR COMPONENT 07-SEP-2023 - THS